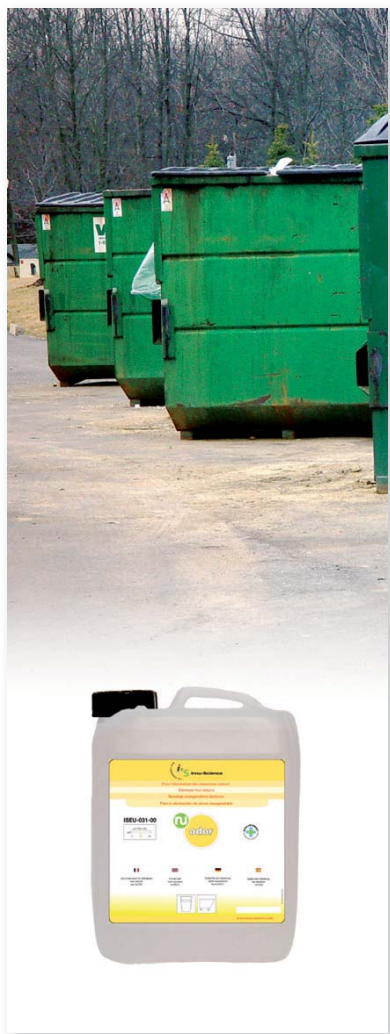




ISEU-031-00

ELIMINATE FOUL ODOURS – INDUSTRIAL STRENGTH



ODOUR CONTROL

**Dosage for automatic dispenser:**

**Based on rubbish/waste volume to be treated:**

**Less than 1m<sup>3</sup>:**  
3-5 sprays per day (50ml per spray)

**1-3m<sup>3</sup>:**  
5-10 sprays per day (50ml per spray)

**3-6m<sup>3</sup>:**  
5-10 sprays per day (50-100ml per spray)

**More than 6m<sup>3</sup>:**  
Ask your Innu-Science sales manager

Description

Nu-Odor™ is an extremely powerful odour control product that uses biotechnology to eliminate unpleasant odours caused by decomposing organic matter.

Applications

Nu-Odor™ can be used in waste compactors, rubbish bins, garbage trucks and any other place where it is important to eliminate foul odours. It can also be used on surfaces that have been left smelly due to a spill or contamination by feces or vomit. FOR PROFESSIONAL USE.



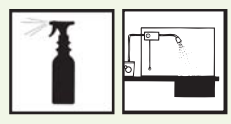
Directions

Nu-Odor™ comes ready to use. Spray directly on surfaces where odours are detected.

**Odours on surfaces - Manual use:** ① Identify the surfaces that are generating foul odours. ② Clean them if necessary. ③ Using a spray bottle or dispenser, mist the surfaces with two or three sprays of the product. ④ Let stand. ⑤ Repeat as needed.

**Rubbish and other waste - Manual use (for small quantities):** ① Using a spray bottle, mist the product (two or three sprays) directly on the rubbish or waste. ② Repeat two to three times per day or as needed.

**Rubbish and other waste - Automatic use:** ① Install a metering pump equipped with a timing device (ask your Innu-Science sales manager for more information on this treatment system). ② Connect the product delivery tubing. ③ Program the automatic sprays (concentrate sprays during periods when waste is generated). ④ Direct the spray nozzles towards the surface of the waste to be treated. ⑤ Start the system.



Cleaning tips



Precisely locate the source of the odour ■ Regularly check that the automatic treatment system is operating, it is properly programmed and the spray system is properly oriented and unobstructed ■ Regularly check to see if product needs refilling ■ Never mix products.

Innu-Science RH (UK) Limited  
Woodside Lodge, Cobbett's Hill  
Weybridge, Surrey KT13 0UA  
Tel.: +44 (0) 7740 100222  
Fax: +44 (0) 1942 887160  
www.innu-science.co.uk





ISEU-031-00

## ■ ELIMINATE FOUL ODOURS – INDUSTRIAL STRENGTH



### Respect for the environment



#### Tips for being greener

Follow work procedures ■ Stop refrigerating waste storage areas being smelly by using **Nu-Odor™** ■ Do not use fragrances to try to mask odour problems ■ Never use chlorinated cleaners or products (bleach) ■ Do not use disinfectants to try to resolve hygiene and odour problems ■ Train staff on the environmental impact of their work.



#### Environmental benefits

Reduced environmental stress ■ Low aquatic toxicity and readily biodegradable (according to OECD 301 series tests) ■ Reduced chemical waste ■ No VOCs ■ Elimination of VOC-generating automatic fragrance dispensing systems ■ Reduction of sick building syndrome ■ Reduced energy use since there is no need to refrigerate waste storage rooms ■ Reduced energy use due to effective cleaning without hot water.

Fits perfectly into any organisation's efforts to be more eco-responsible by going green.

### Technology

The technology behind **Nu-Odor™** is based on competitive bacterial cultures that are specially formulated to quickly decompose organic matter. A key feature of these cultures is that they grow rapidly, filling the treated area before smelly microbial species take over the organic matter and create foul odours.

### Composition

<5% non-ionic surfactants, fragrance, bacterial cultures, preservative.

### Properties

Amber liquid, camphor scent.



### Regulatory compliance

**Regulation (EC) No 648/2004 on Detergents**  
**Directive 1999/45/EC and Amendments on Dangerous Preparations**  
**Regulation (EC) No 1907/2006, Annex II on Safety Data Sheets**  
**REACH Regulation (EC) No 1907/2006**

This preparation is not classified as hazardous according to European Directive 1999/45/EC and its amendments. Not regulated by the regulation on transport of dangerous goods.

**Material safety data sheet available upon request. Read it before using this product.**

**Safety advice: S25** - Avoid contact with eyes. **S26** - In case of contact with eyes, rinse immediately with plenty of water and seek medical advice.

### Packaging codes

ISEU-031-00-1630 12 X 630 ml (including 4 sprayers)  
ISEU-031-00-1005 1 X 5 litres (Part No 810011)  
ISEU-031-00-1010 1 X 10 litres  
ISEU-031-00-1025 1 X 25 litres

